

GAMMATRACER SPIDER



Quick deployment unit for radiation monitoring

- Maximum protection of the first responders
- Operational after few minutes installation
- Emergency proof communication and built-in GPS
- Rechargeable battery, up to 4 years autonomy



MONITOR THE INVISIBLE

WWW.BERTIN-INSTRUMENTS.COM

PEO B.V.

info@gotopeo.com
www.gotopeo.com

The Netherlands

Havenweg 16, 6603 AS Wijchen
+31 (0)24 648 86 88

Belgium

Watermolenstraat 2, B-2910 Essen
+32 (0)3 309 32 09

CoC 34107894

VAT NL807859151B01

IBAN NL29 RABO 0356 1960 46

BIC RABONL2U



GAMMATRACER SPIDER

Emergency probe for gamma monitoring



GammaTRACER Spider is an innovative gamma monitoring solution for emergency applications.

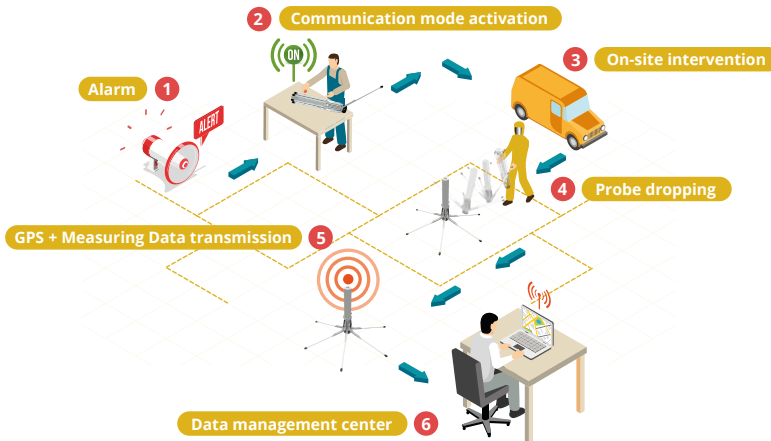
Based on GammaTRACER's field proven technology, already in operation in more than 100 countries, it provides reliable measurements.

The GammaTRACER Spider can be installed anywhere in only a few seconds thanks its self-deployable system and feet design, reducing the first responders' exposure in emergency situation.

The probe includes a satellite modem providing reliable measurements without any telecommunication networks. Its intuitive software is available with the WebVIEW interface to be used on laptop, smartphone or tablet.



Quick deployment probe



Environmental monitoring range

Discover other products of Bertin Instruments



Beta and Gamma air monitoring

Monitoring system dedicated to crisis management



From one probe to turnkey solutions: your data is secured and saved in a SQL central server, as well as easily integrated in your local IT system.

Technical features

DETECTION PRINCIPLE
2 GM Tubes, energy compensated H*(10)

DIMENSIONS
110 mm x 650 mm

WEIGHT
Manual stand-up : 2,2 kg
Self stand-up : 3,6 kg

ENERGY RANGE
From 45 keV to 2 MeV

MEASUREMENT RANGE
From 20 nSv/h to 10 Sv/h

MEASUREMENT CYCLE
From 1 min to 2 hours

BUILT-IN SENSORS
GPS, temperature, movement

DATA TRANSMISSION
Satellite, Radio (ShortLINK/SkyLINK)

AUTONOMY
Up to 4 years without data transmission

With the expertise of **SAPHYMO**

Bertin Technologies S.A.S • Parc d'Activités du Pas du Lac • 10 bis, avenue Ampère, 78180 Montigny Le Bretonneux, France
WWW.BERTIN-INSTRUMENTS.COM

RCS: 422 511 204 VERSAILLES | SIREN: 422 511 204